



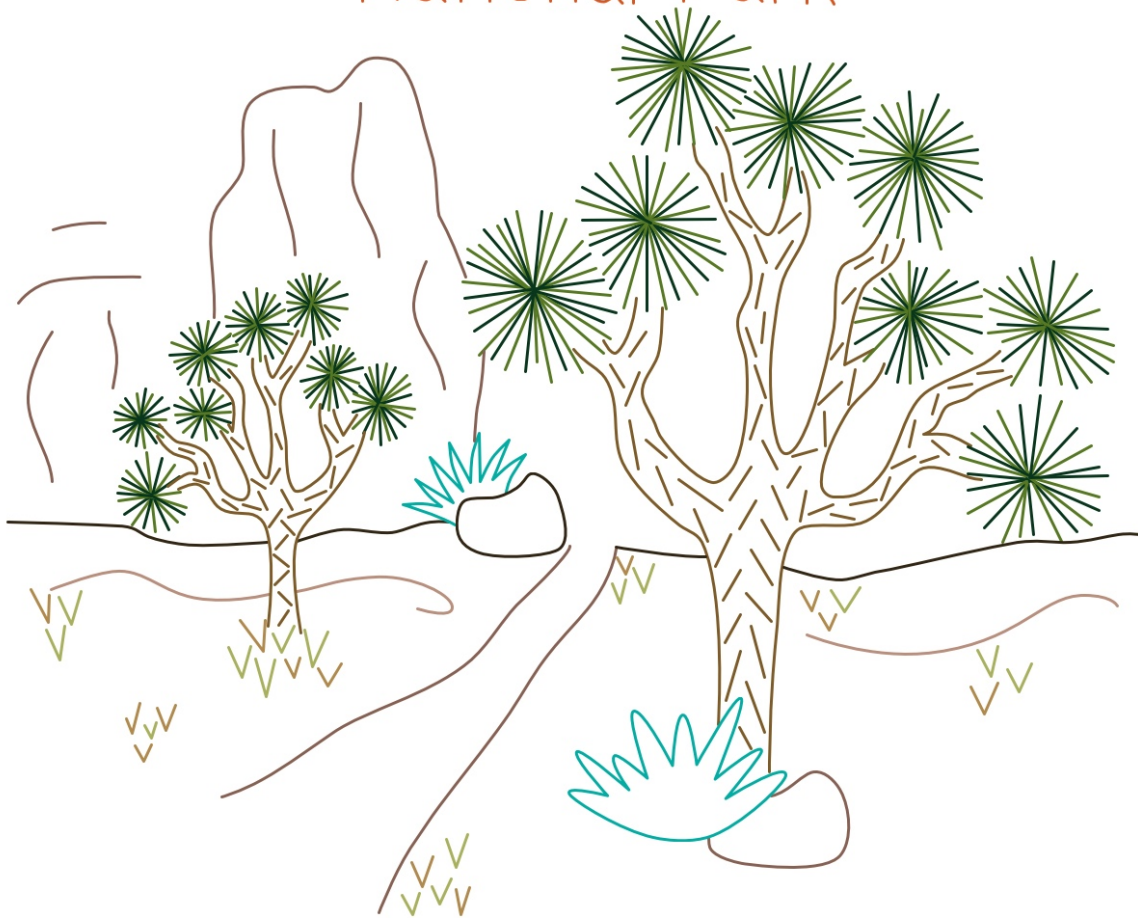
Joshua Tree National Park Embroidery Pattern



Full Size Design

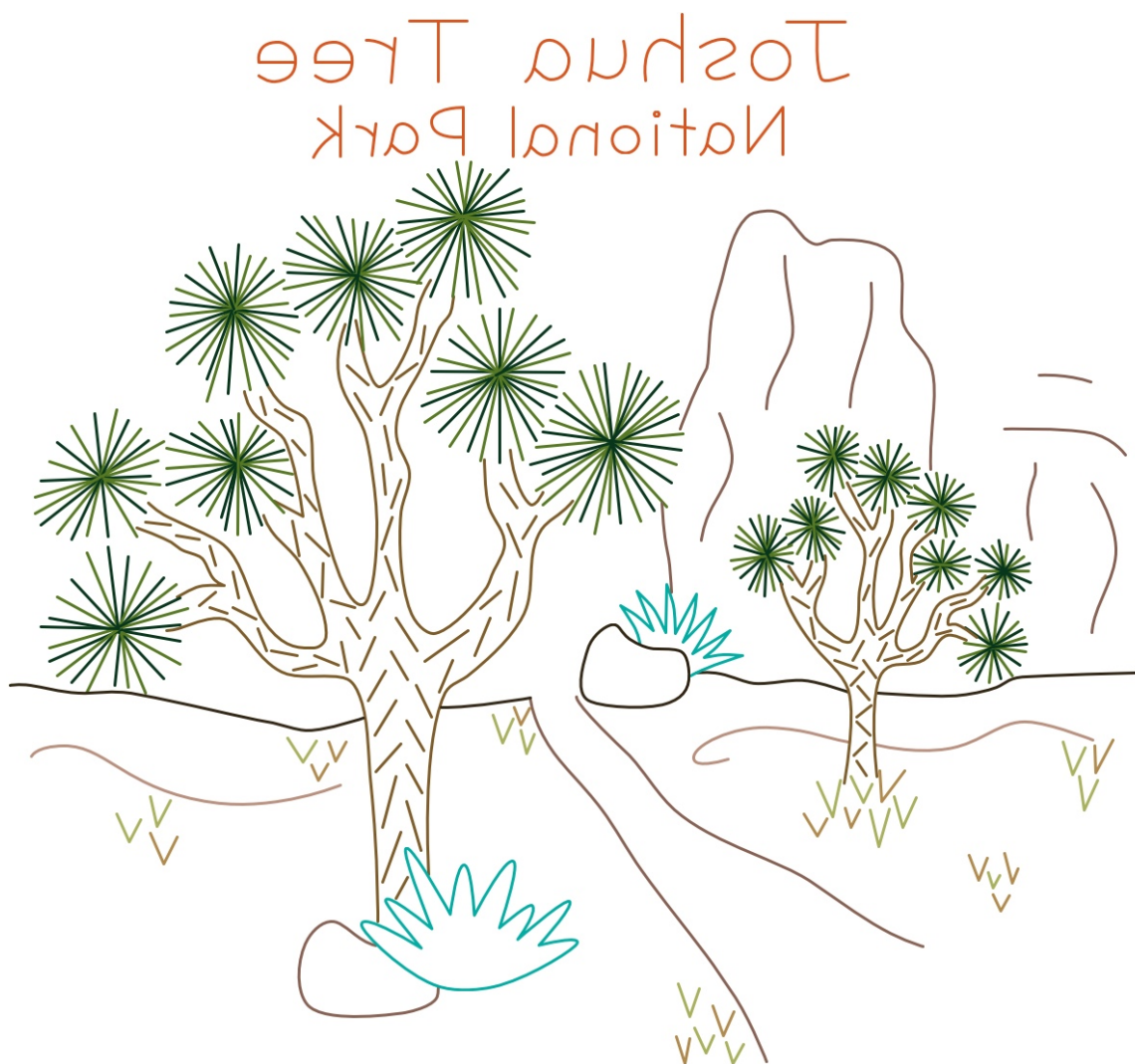
Fits 7 or 8-Inch Hoop

Joshua Tree National Park



Reverse Image for Iron-On Transfer

Fits 7 or 8-Inch Hoop



Materials List

- Fabric Square appropriately 9" x 9":
Choose a fabric with a medium weave such as a cotton, muslin, or flour sack. The above example uses a white muslin, but don't be afraid to try a darker color.
- Embroidery Hoop:
Size 7 or 8-inch
- Embroidery Needle:
Size 7 or 9
- Items for Pattern Transfer:
Water Soluble Pen, Iron-On transfer pen, Transfer Paper, or Stick & Stitch Paper (See the Pattern Transfer Instructions)
- Small Scissors
- DMC Embroidery Floss:
319, 420, 469, 610, 734, 840, 920, 992, 3021, 3064
*Floss colors may need to be adjusted if using a dark colored fabric
- Felt or Wooden Frame for finishing the embroidery:
(See How to Finish Embroidery)

Embroidery Pattern Transfer Instructions

Light Table/ Window:

Place the pattern on a light table or tape it to a bright window. Position the fabric on top and secure in place. Trace the pattern onto the fabric using a water erasable transfer pen. The markings from this pen will remain until washed gently with water.

*Pro tip: A computer or tablet screen makes a great light box! Simply open this PDF on your computer, tape the fabric over the pattern on the screen, and trace it. No printer needed!

Iron On Transfer Pencil or Pen:

Iron on transfer pens and pencils can be found at many fabric/craft stores. First, print the REVERSE IMAGE pattern. Trace the pattern with the iron on pencil or pen. Place the traced pattern on an iron-safe surface and secure the fabric on top. Press a hot iron on the fabric for 5-10 seconds. Do not move the iron around. Gently lift an edge of the fabric to check that the design has transferred before removing the fabric.

*This method will leave permanent marks that need to be covered with stitches.

Transfer Paper:

Transfer Paper can be found at many fabric or craft stores. It is coated on one side with a powdery ink that will wash out of the fabric.

Transfer Paper (continued)...

To use, secure your fabric to a flat, hard surface, cover with a piece of transfer paper (powder side down) and place the printed pattern on top. Trace the pattern using a pencil, or stylus. Press very firmly and make sure the paper does not move.

This method works well for transferring patterns to dark fabric. A white or yellow transfer paper shows up nicely.

Stick & Stitch Transfer Paper

This dissolvable, sticky-backed, transfer paper can be drawn on by hand, or printed on using a printer. The pattern goes on the rough (non-sticky) side of the paper. If tracing by hand, use a light-colored pen or pencil and don't press too hard. If using a printer, make sure the setting is for plain, not photo, paper.

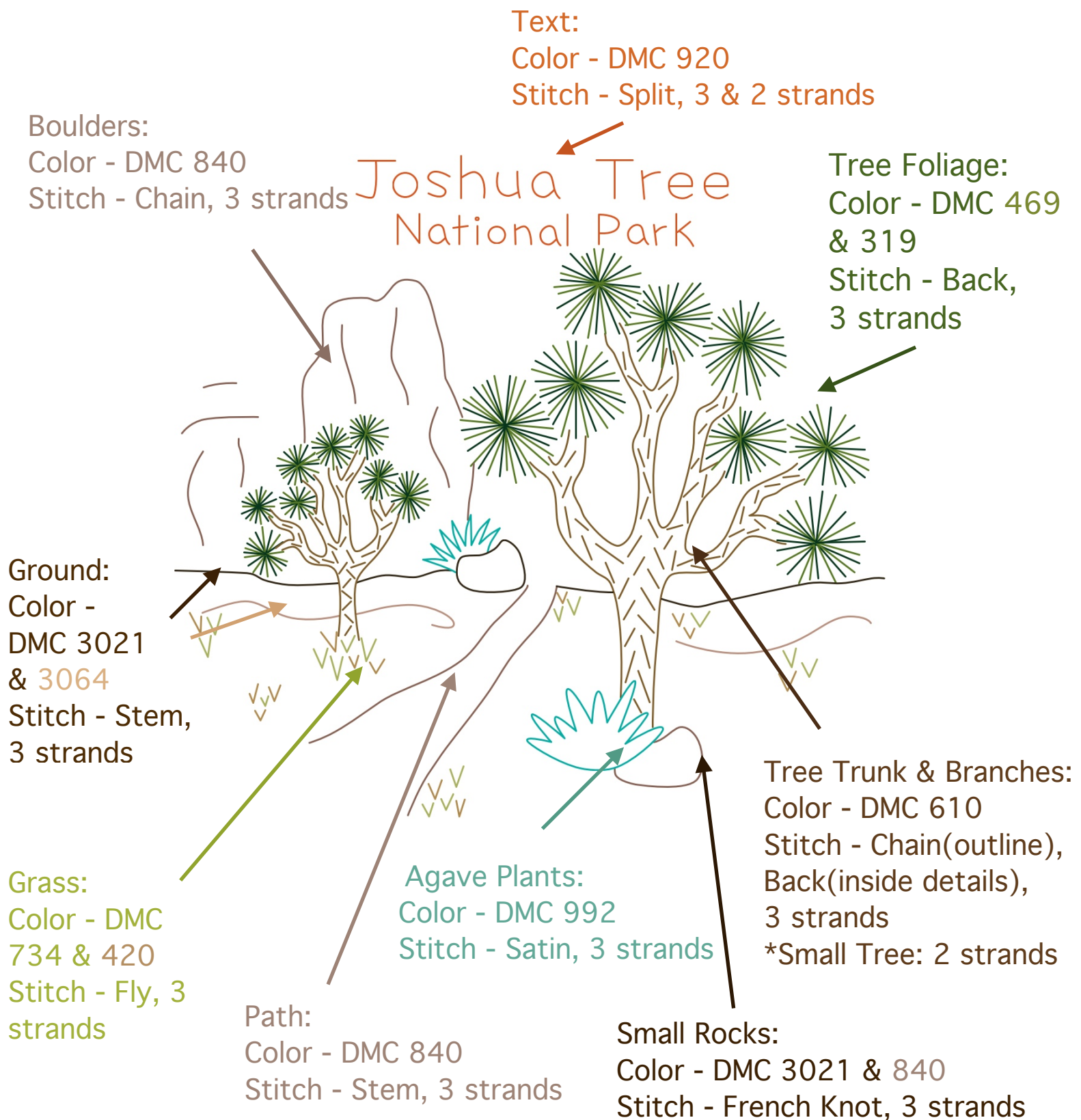
Once the pattern is on the paper, lay the fabric flat on a hard surface, remove the backing from the transfer paper, place the pattern on top, and press firmly. Stitch as usual.

When finished stitching, place the fabric in a shallow bowl of lukewarm water. Make sure the water completely covers the fabric. Leave it for 5-10 minutes. Shake the fabric in the water to remove any loose bits of semi-dissolved paper. Rinse and lay flat to dry.

Color & Stitch Guide

Need help with embroidery stitches?

Visit: WanderingThreadsEmbroidery.com/embroidery-stitch-tutorials



How to Finish Embroidery: Two Methods

Frame in the Hoop

1. Using the inner ring of an embroidery hoop, trace a circle on a piece of felt and cut it out.

2. Place the finished embroidery in the hoop, stretch it smooth and tighten the screw. Trim the excess fabric around the edges roughly an inch wider than the hoop.

3. Cut off a long piece of sewing thread. Make sure it's long enough to stitch all the way around the circle. Leaving a 4-5-inch tail at the beginning, stitch around the edge with Running Stitch.

4. When you've stitched all the way around, grasp both ends of the thread and pull until the fabric gathers together. Tie a knot and cut off the excess thread.

5. Position the felt circle over the back and sew it into place with a whip stitch.

6. Continue sewing all the way around and tie off the thread.



In a Wooden Frame

1. Cut a piece of foam board to fit the inside dimensions of your frame.

2. Position the foam board in the center of your embroidery piece. Make sure it's straight! Flip over so the fabric is on the bottom. Starting with the long sides, fold the extra fabric into the center. If necessary, trim the fabric to leave a roughly 1-4" space in between. Pull the fabric tight and secure with long pins.

3. Repeat this process on the short sides. If the corners are bunching, fold them on a diagonal and trim a bit. The finished fabric-wrapped foam board needs to fit snugly inside the frame so try your best to avoid bulky corners.

4. Secure the fabric using a simple lacing technique. Fold the extra fabric from the short sides out of the way. Insert a needle with a long strand of thread about a 1/4-inch from the edge of the fabric and weave back and forth while pulling the fabric tight. Tie off the thread at the end and start a new piece. Finish the lacing by folding the fabric from the short sides into the middle and lacing it together.

5. Remove the pins and place the embroidery board inside the frame.

6. Replace the frame backing, flip it over, and admire your handiwork!

For a framing tutorial with photos, visit:
www.wanderingthreadsembroidery.com/how-to-frame-embroidery/

Love this pattern and want to stitch more?

You are in luck! Visit www.wanderingthreadsembroidery.com to view the full line of downloadable embroidery patterns.

- More National Park Patterns
- 50 Unique Patterns for Each of the 50 U.S States
- 50 U.S. State Flower Patterns
- U.S & Canada Travel Map Patterns
- Vintage Trailer Patterns
- Botanical Patterns
- City Skyline Patterns
- Holiday Patterns including Christmas Ornaments

In addition to patterns, you will also find a full line of embroidery resources to teach and inspire:

- Step-by-Step Embroidery Stitch Tutorials
- FREE Patterns!
- How-To Tutorials Including Framing, Finishing, Embroidery Letters, and More!

Questions or comments? Send me an email at:
amanda@wanderingthreadsembroidery.com

I would love to see your finished pieces! You can find me on Instagram at www.instagram.com/wanderingthreadsembroidery or on Facebook at www.facebook.com/wanderingthreadsembroidery.

Thanks so much for purchasing the Joshua Tree National Park Pattern and happy stitching!

~Amanda